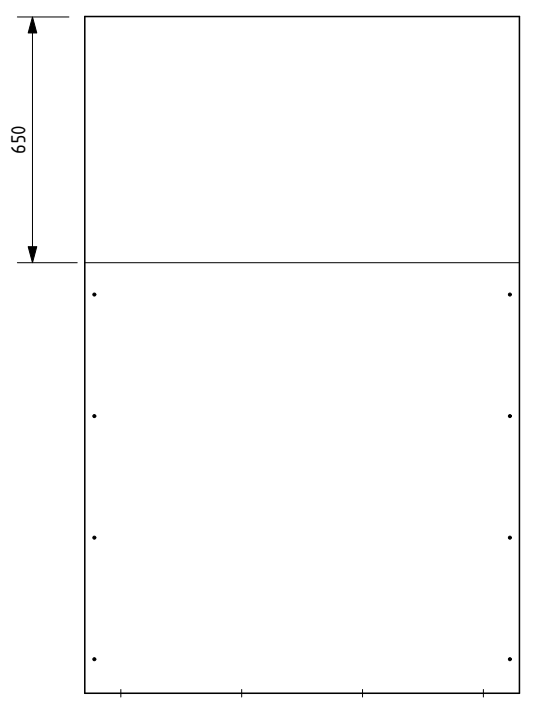
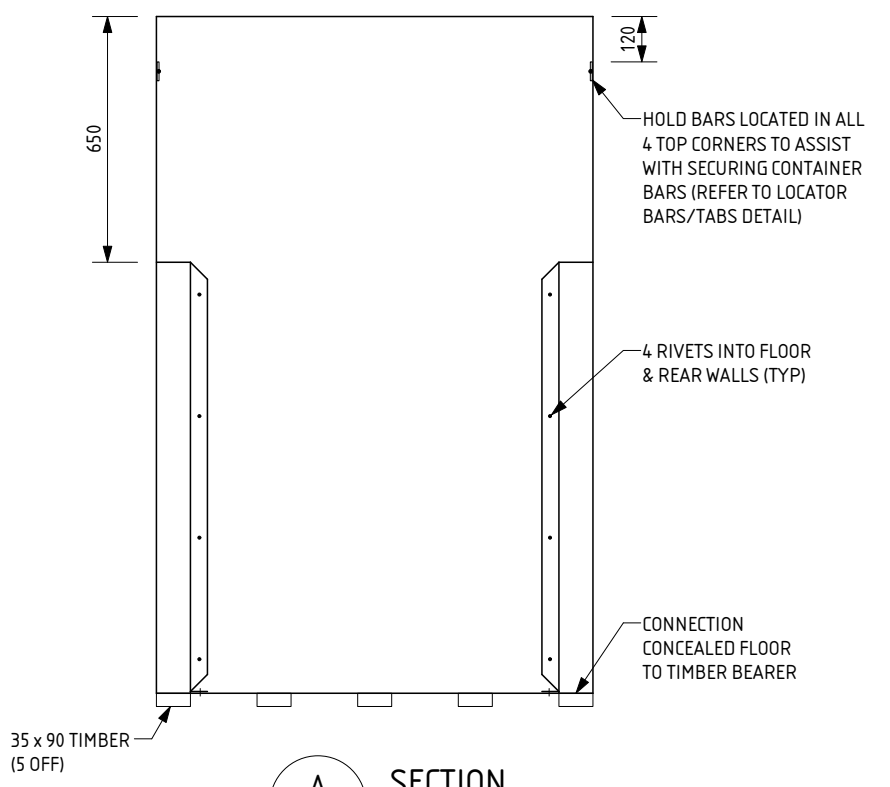
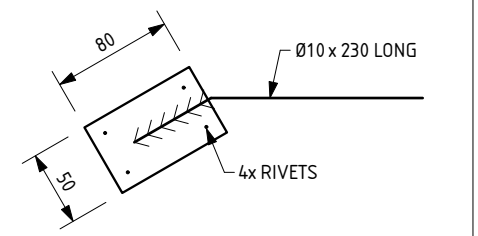


CHARITY BIN TOP PLAN 1:20

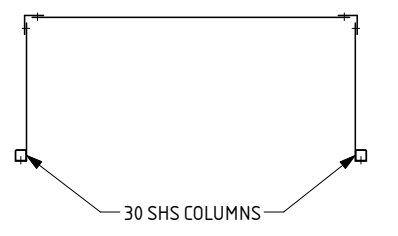


CHARITY BIN SIDE WALL ELEVATION 1:20

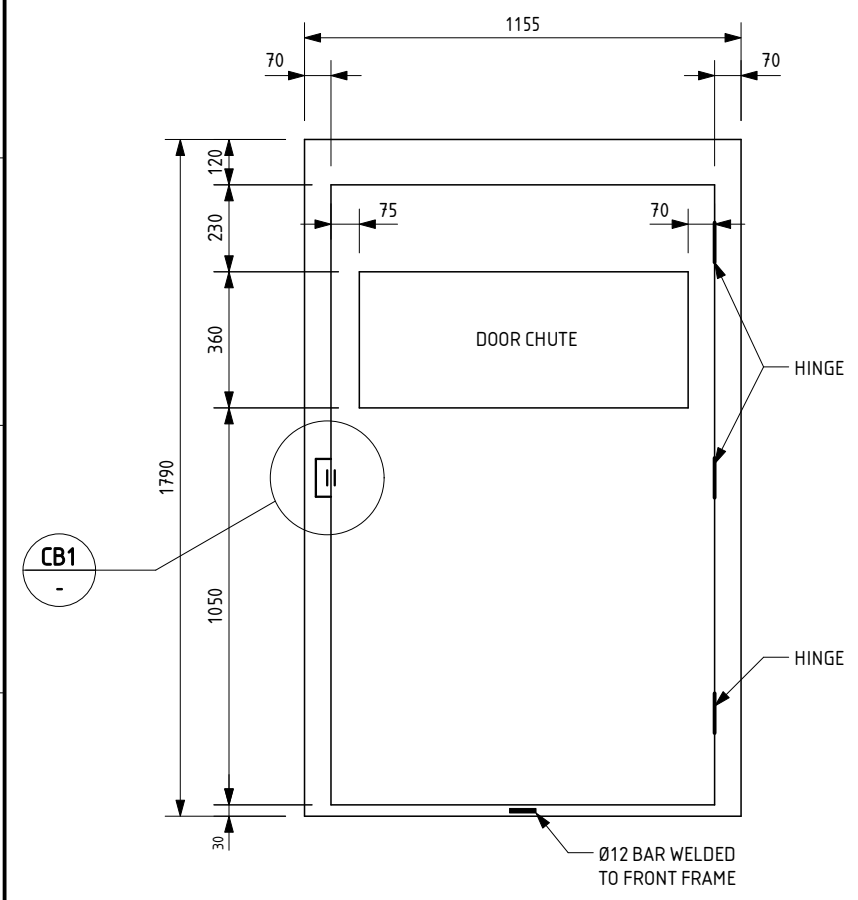
- NOTES**
1. THESE PLAN ARE OF A BUILT STEEL FABRICATED BOX THEY ARE SITE MEASUREMENTS ONLY WITH NO STRUCTURAL CALCULATIONS/REVIEWS/VERIFICATIONS UNDERTAKEN.
 2. SHEETING ADVISED TO BE 1mm
 3. INDIVIDUAL SHEETS FIXED TOGETHER VIA RIVETS.
 4. SHEETING FIXED TO COLUMN VIA RIVETS.
 5. HOLD BAR PLATE FIXED TO SHEETING VIA 4 RIVETS.



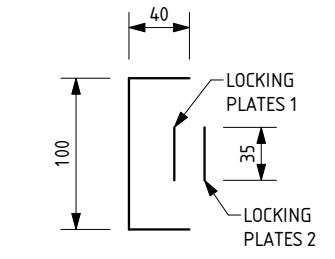
LOCATOR BARS/TABS DETAIL 1:5



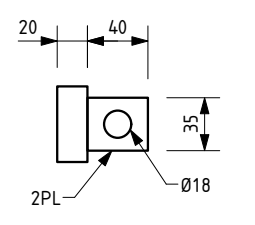
D SECTION SCALE: 1:20



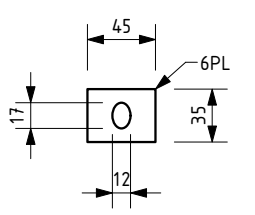
CHARITY BIN FRONT DOOR ELEVATION 1:20



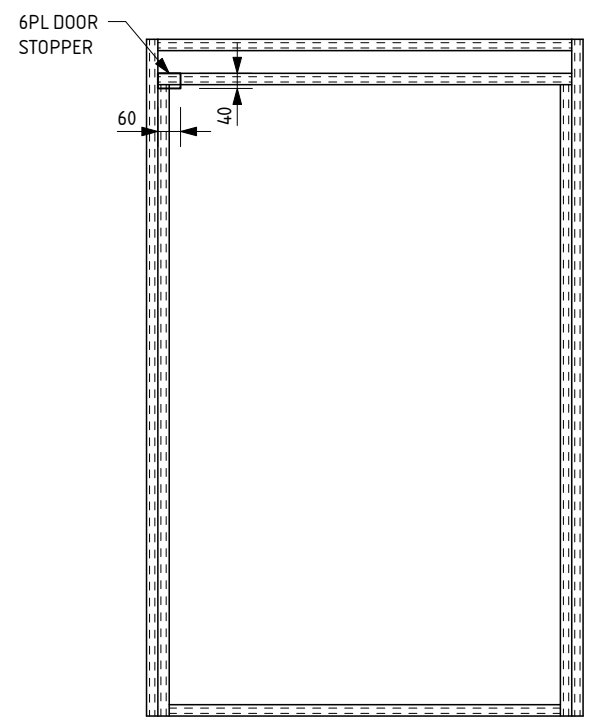
CB1 DETAIL SCALE: 1:5



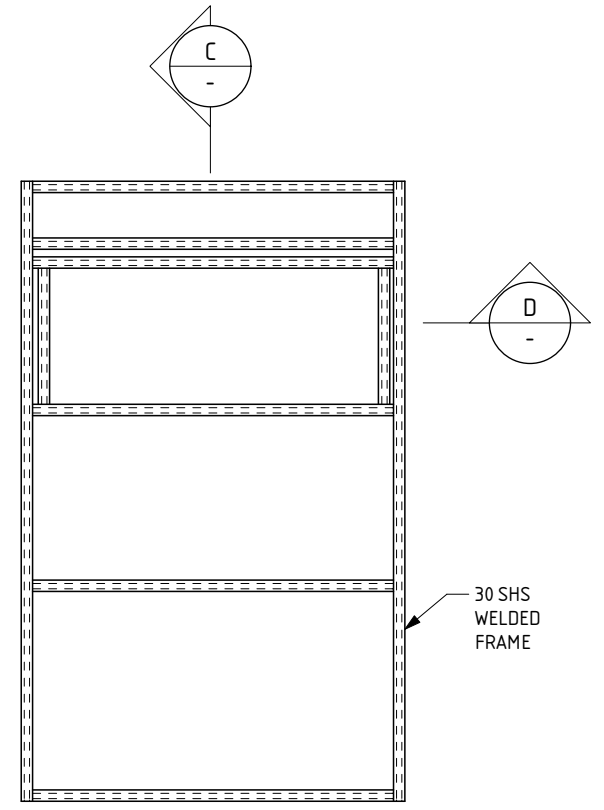
LOCKING PLATE 1 DETAIL 1:5



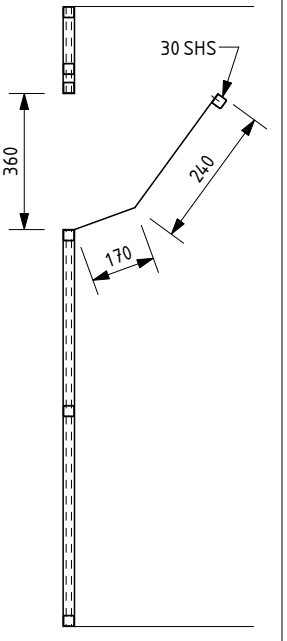
LOCKING PLATE 2 DETAIL 1:5



CHARITY BIN FRONT FRAME PLAN 1:20



CHARITY BIN DOOR FRAME PLAN 1:20



C SECTION SCALE: 1:20

REV	BY	DATE	ISSUE / REVISION DESCRIPTION	CHK	APP	DRAWN	HUY NGUYEN
A	HN	24/11/23	ISSUED FOR CLIENT REVIEW	SAC	SAC	DESIGNED	SAM CRAIG
B	HN	22/12/23	ISSUED FOR CLIENT REVIEW	SAC	SAC	REVIEWED	
0	HN	09/01/24	ISSUED FINALISED DRAWINGS	SAC	SAC	DATE	NOVEMBER 23
APPROVED BY:							

STRUCterre consulting **L+R** ENGINEERS MANAGERS SCIENTISTS

Rehbein Consulting Pty Ltd (ABN: 12 126 086 039) Trading as L+R
 1 ERINDALE ROAD, BALCATTA W.A. 6021
 TEL (08) 9205 4500 FAX (08) 9205 4501 EMAIL: commercial@lar.net.au

PROJECT	CHARITY BIN
CLIENT	WESTERN AUSTRALIA RETURN RECYCLE RENEW LIMITED

STATUS	ISSUED FOR CLIENT REVIEW
SCALE	1:20, 1:5
PROJECT No.	1.23.7092.1-S-001

COPYRIGHT STRUCTERRE CONSULTING ENGINEERS/L+R. THESE DRAWINGS ARE SOLE PROPERTY OF STRUCTERRE CONSULTING ENGINEERS/L+R AND MAY NOT BE USED IN WHOLE OR IN PART WITHOUT WRITTEN OR FORMAL PERMISSION FROM STRUCTERRE CONSULTING ENGINEERS/L+R