



**Sustainable Glass  
Packaging at Orora**

# Trusted partner to some of Australia's biggest brands...



*Orora Glass services the beverage industry on a range of levels including wine, beer, beverage, olive oil, food jars and spirits*



Launch of new 1litre & 750ml industry bottle with 500ml industry bottle due for launch in 2023

Launch of **Orora Crystal** in late December 2021

# Our Promise to the Future



## Circular Economy

- Recycled content
- Recyclable packaging
- Renewable substrates
- Certification



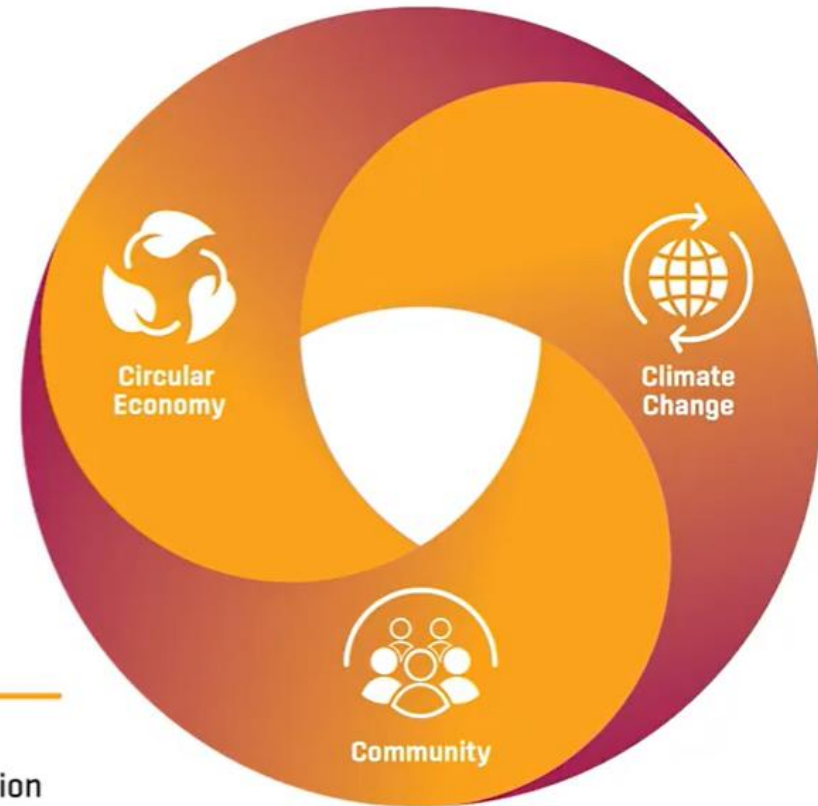
## Climate Change

- GHG reduction
- Energy efficiency
- Renewable energy
- Climate risk analysis



## Community

- Safety & health
- Diversity, equity & inclusion
- Human rights and supply chain
- Responsible sourcing



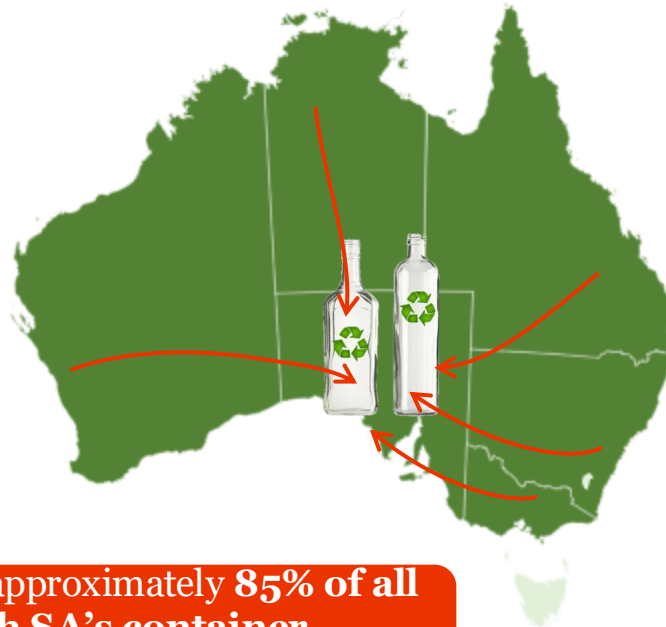


**Orora commenced collecting waste glass from WA's container deposit scheme in Oct 2020, providing a positive boost to our available cullet for recycling.**



Orora Glass  
to contain  
more than  
**60%**  
**recycled**  
**content** by  
2025

Orora sources  
cullet from WA,  
SA, NT, QLD, VIC  
and NSW



**Orora currently recycles approximately 85% of all glass collected through SA's container deposit scheme.**

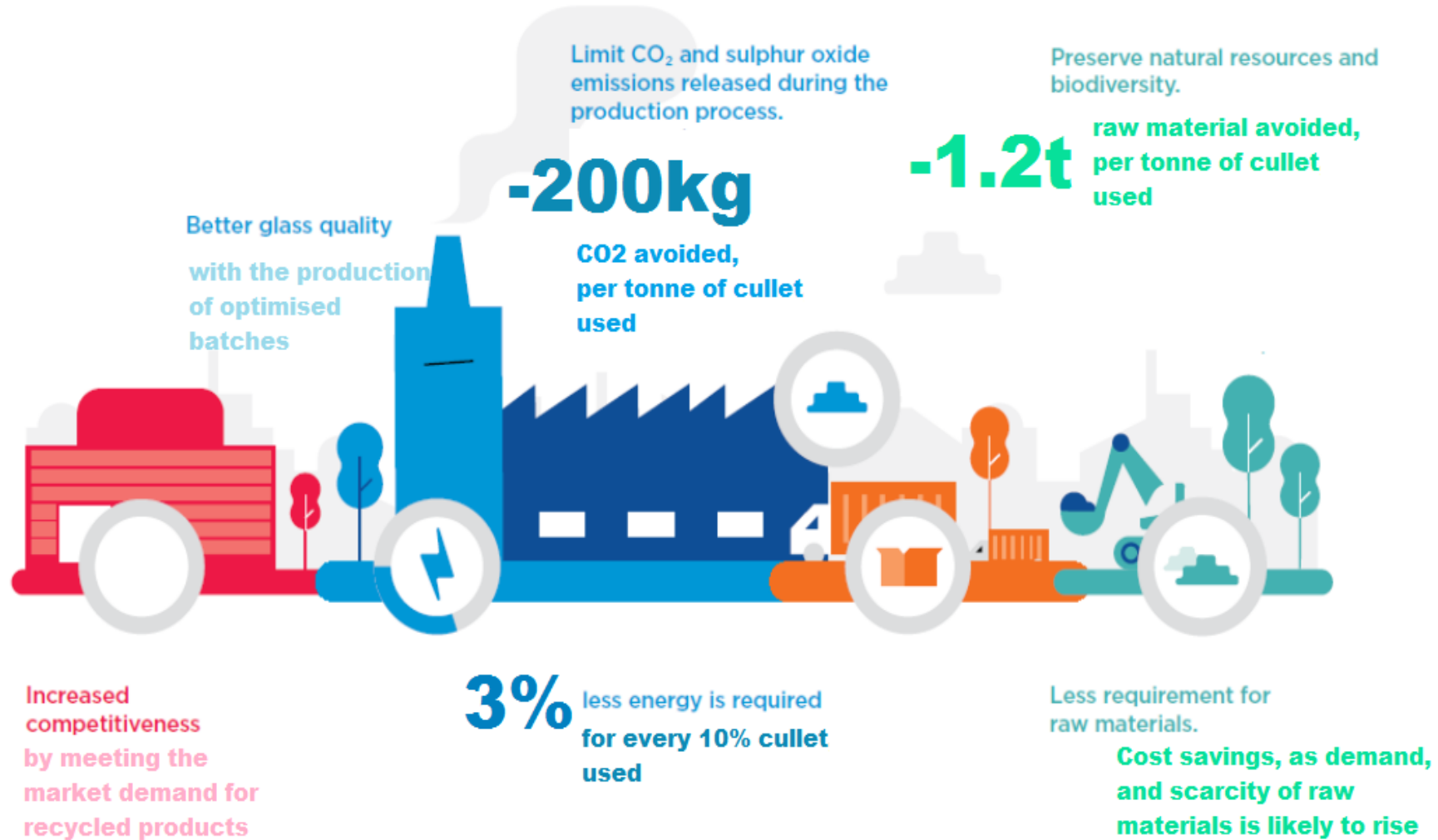


**Cullet in Australia:**

- There are significant geographic constraints to accessing cullet
- Surplus in every state except SA where there is a large deficit
- Accessing clean cullet from other states is critical to achieving Orora's recycled content target

Orora's % of recycled glass was 38% for FY23

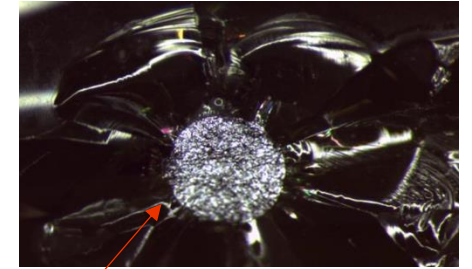
# Benefits of cullet



# Challenges of Cullet

## Cullet contains:

- Presence of organics (labels)
- Variable chemistry due to mixed colour
- Other contaminants CSP, Metallic



# Glass Beneficiation Process



## Processing – Phase 1

Crushing – breaking of whole bottles

De-labelling – removing labels and organic material from the broken glass  
(in preparation for the optic sorter machine)

Contamination removal

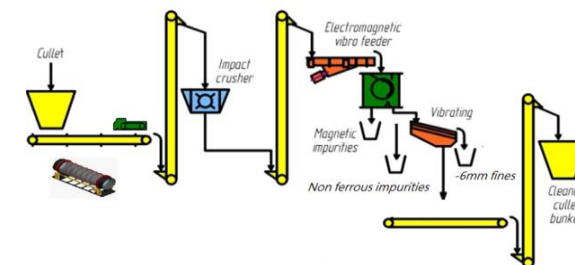
- Ferrous metal separation (using a magnetic separator)

- Non-ferrous separation (using an eddie current machine)

- Ceramic/stones/porcelain (CSP) removal (using optical sorting machines)

## Additional plant capability–Phase 2

- Colour separation into Green, Flint, Amber (using optical sorting machines)



# Industrial Glass Making overview

