

## **RECYCLING OUTCOMES: PET**

# OVERVIEW OF DISCUSSION TODAY

- Material recycled in Western Australia
- Recycling capacity and Australia targets
- Visits to recycling plants in Victoria
- PET recycling process

# Tonnes of materials collected in 2023-2024

5,000t

## Aluminium

Sth Korea 49.1%  
Thailand 25%  
Malaysia 23.5%

40,000t

## Glass

Australia 100%

6,000t

## PET

Australia 97.8%  
Malaysia 1.4%  
Lithuania 0.8%

## Recovered Containers

64.5%\*

Glass	79.5%
Aluminium	68.7%
<b>PET</b>	<b>56.6%</b>
Others	76.6%
Steel	56.6%
HDPE	43.2%
<b>LPB</b>	<b>27.8%</b>

237t

## LPB

Spain 77%  
Australia 23%

210t

## HDPE

Australia 100%

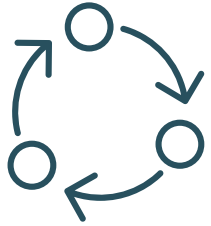
46t

## Others

Australia 50.2%  
India 49.8%

\*As at 30 June 2024

# RECYCLING CAPACITY IN AUSTRALIA AND NATIONAL PACKAGING TARGETS FOR 2025



**45,000t/pa**

New PET recycling capacity commissioned in 2023



**APCO**

70% plastic packaging recycled or composted

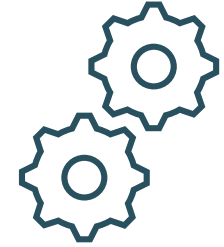
20% recycled plastic packaging



**2027**

70,000 shortfall in available recovered recyclable PET

PET recovered is 6.6% of 6.98m t/pa

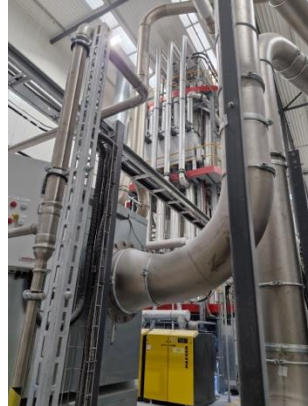
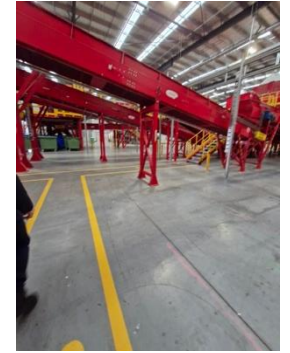


**5**

Recyclers of PET in Australia

Total capacity 85,000t

# CIRCULAR PLASTICS AUSTRALIA – ALTONA, VIC



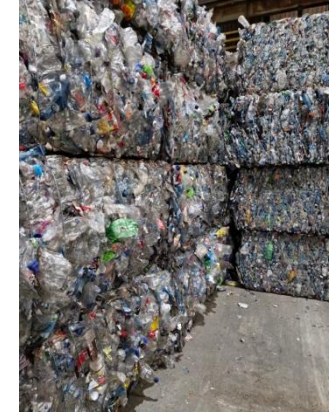
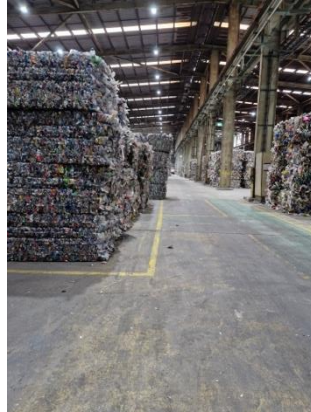
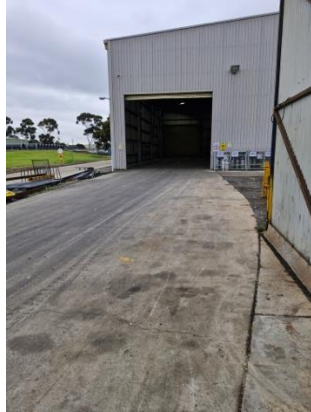
- 15,000t per annum
- PET beverage bottles (rigid plastics)
- Supply to Australian beverage companies

# CIRCULAR AUSTRALIA – DANDENONG, VIC



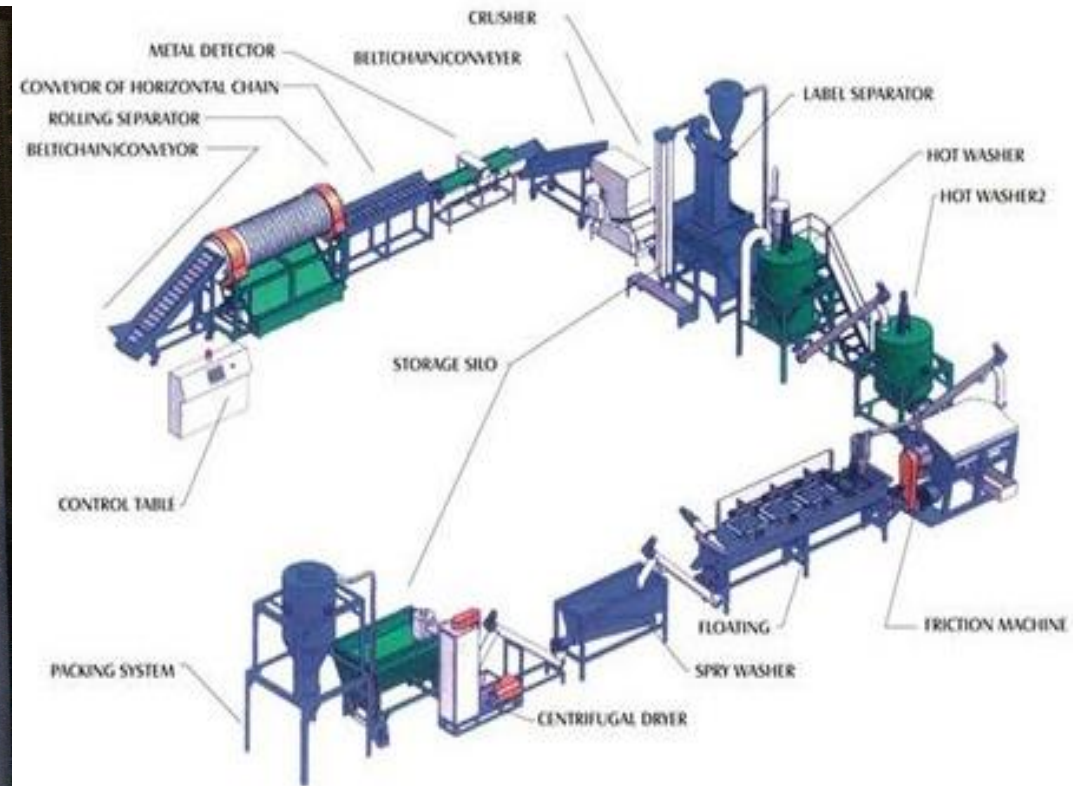
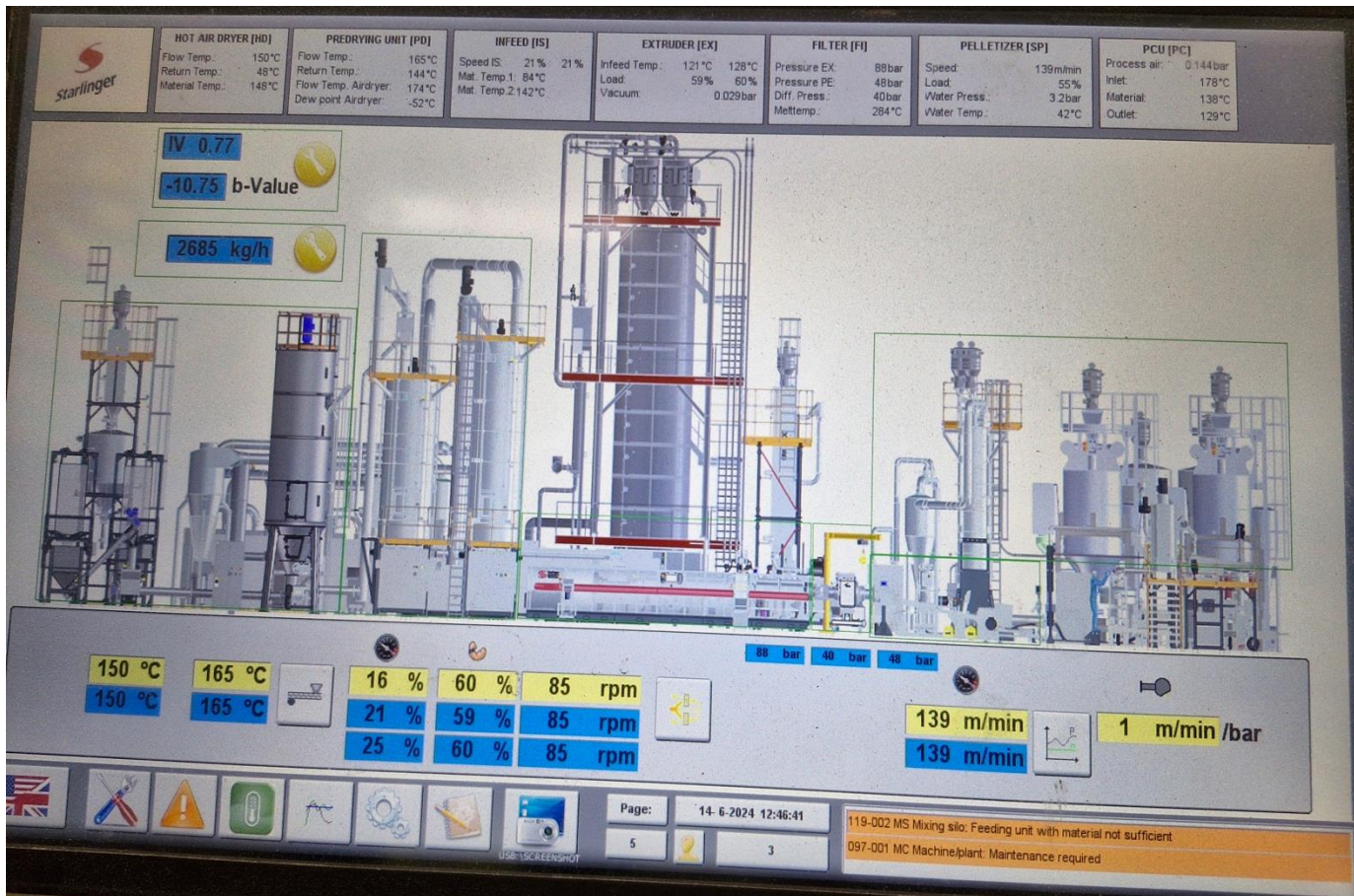
- 15,000t per annum
- PET and HDPE rigid plastics
- Supply to Martogg group packaging and local bottlers

# VISY RECYCLING – SOMERTON, VIC



- Acquired Somerton facility from Advanced Circular Polymers in November 2023.
- Process all Scheme light material and MRF materials, bale them, and send them to Smithfield, NSW for palletising.
- Supply to Visy Packaging.

# PET RECYCLING PROCESS







## **NEXT STEPS TO INCREASE PET RECOVERY**

- **PET focus in commercial recovery programs**
- **Continue working with Recyclers to assist in best outcomes for PET**